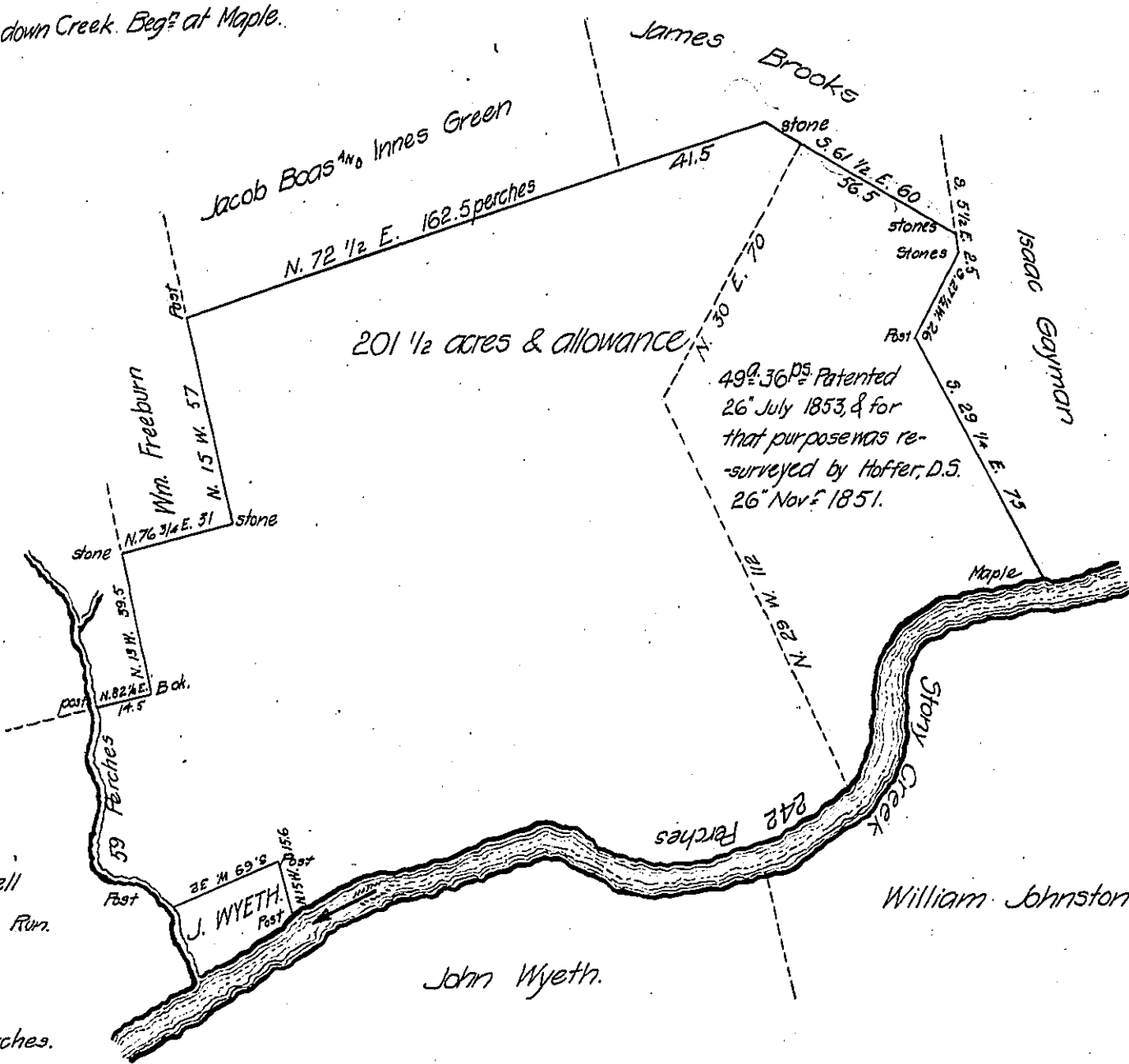


FORM NO. 1.

Courses & Dist<sup>s</sup> down Creek. Beg<sup>s</sup> at Maple.

- 0.74 1/2 W. 25
- 0.60 W. 18
- 0.20 W. 40
- 0.38 1/2 W. 26
- 0.73 W. 26
- 0.69 W. 10
- 0.62 W. 21
- 0.74 W. 66
- 0.46 1/2 W. 10
- 242



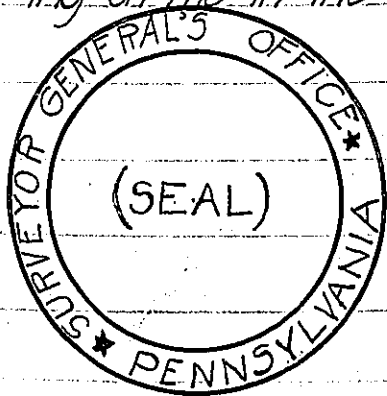
- Courses & Dist<sup>s</sup> up Run.
- N. 39 W. 10
  - N. 36 W. 17
  - N. 31 W. 8
  - N. 3 E. 24
  - 59 Perches.

Surveyed November 10<sup>th</sup> 1814, for James Watt the above described tract of land situate in Middle Paxton Township, Dauphin County, Containing Two hundred one acres a half and allowance of six per cent by warrant of the 7<sup>th</sup> October A<sup>o</sup> D. 1814.

Thomas Smith, D.S.

To Richard T. Leech, Esquire,  
Surveyor General, Pa.

In Testimony That the above is a copy of the original, remain-  
ing on file in the office of the Surveyor General of Pennsylvania,



I have hereunto set my Hand and affixed the Seal of said office, at Harrisburg, this third day of June 1871.

J. M. Campbell, Surveyor General.

IN TESTIMONY that the above is a copy of the original remaining on file in the Department of Internal Affairs of Pennsylvania, made conformably to an Act of Assembly approved the 16th day of February 1833, I have hereunto set my hand and caused the Seal of said Department to be affixed at Harrisburg, this 2<sup>nd</sup> day of August 1907.

Henry Honck  
Secretary of Internal Affairs.